



StormPrism Vault (SPV) is a precast concrete, underground stormwater storage system produced in California by a California based company. The box culvert style system is ideally suited for tight sites with limited space to fit underground structures. The rise/span dimensions can vary from 5' X 5' through 12' X 12', with any combination in between, which makes it easy to tailor for any site.

With elastomeric sealant and bolt pockets at every joint, SPV can be made water tight, making it the perfect choice for rainwater harvesting applications, where the captured water will be recycled and reused.

Benefits:

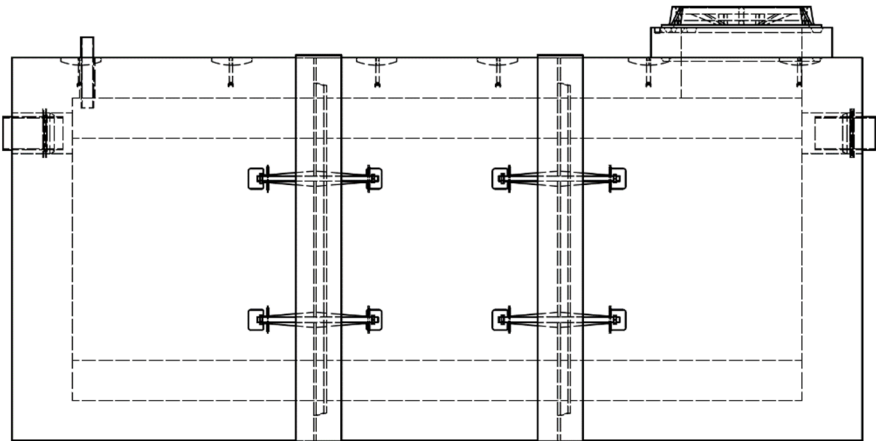
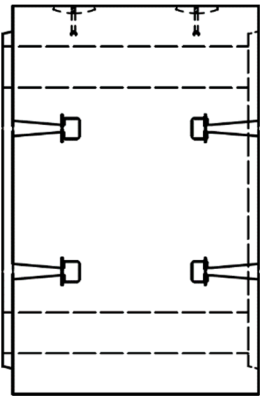
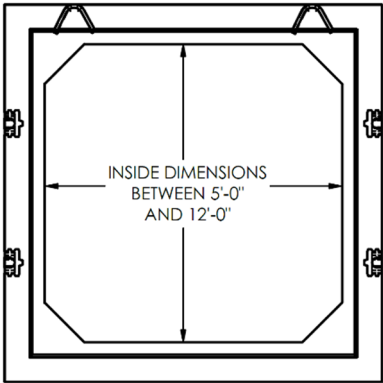
- | | |
|--|---|
| <ul style="list-style-type: none">• Adjustable Length• 100-year Life Span• HS-20 Traffic Rated• Simple to Maintain• No special backfill required | <ul style="list-style-type: none">• Water Tight• Small Footprint• Up to 10' of cover• Includes a ladder for safe access• LA City RR #5758 |
|--|---|

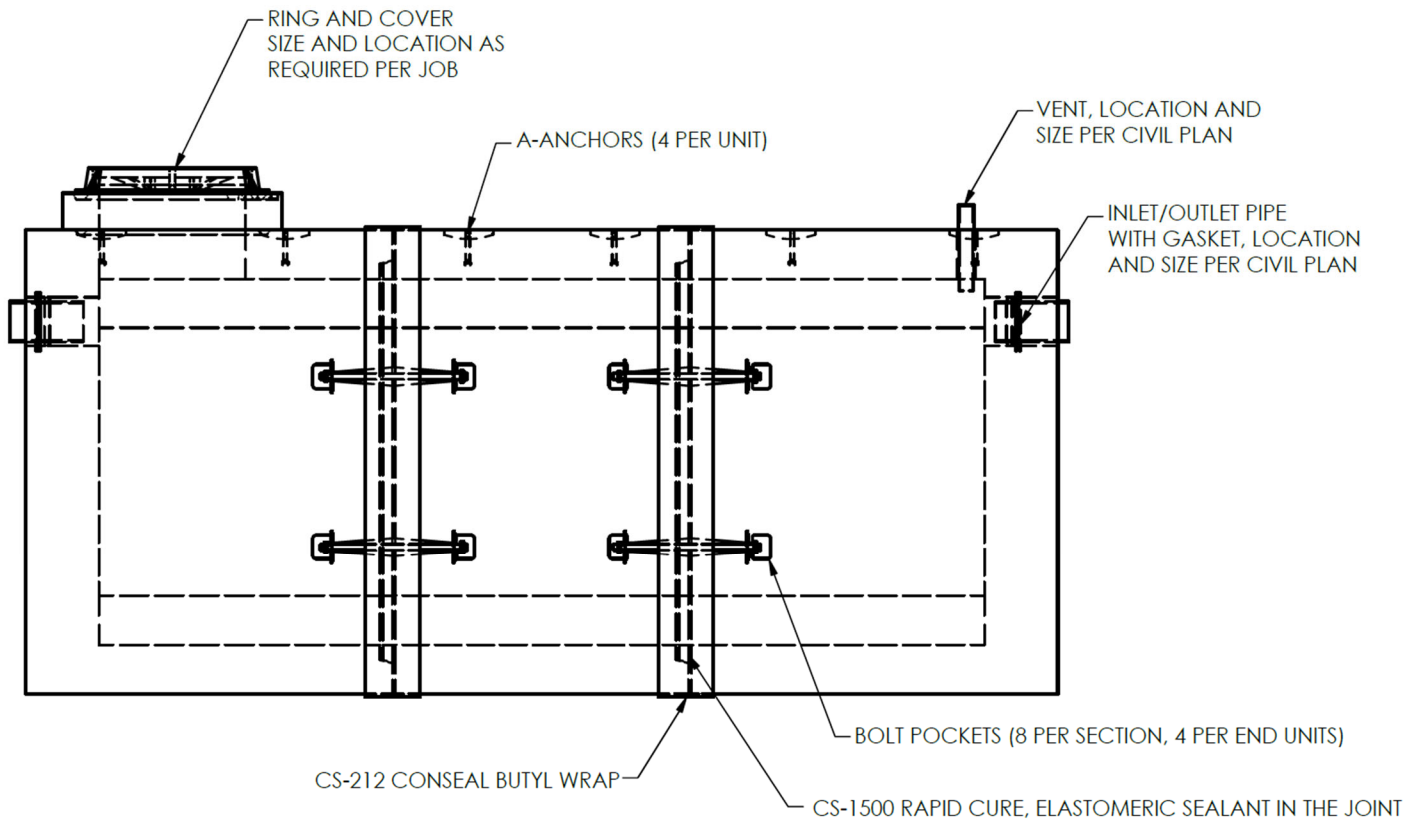
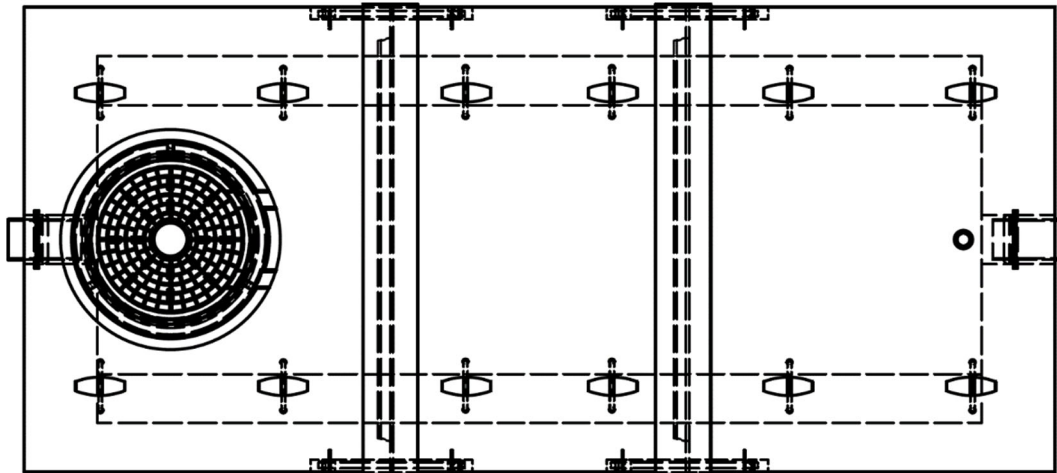
Production/Installation:

- | | |
|---|---|
| <ul style="list-style-type: none">• Large production capability• Easy to transport and set | <ul style="list-style-type: none">• Fast installation• Internal or external pump systems |
|---|---|

Technical support:

- | | |
|--|--|
| <ul style="list-style-type: none">• Design and layout• Budget pricing | <ul style="list-style-type: none">• Written specification• Lead time coordination |
|--|--|





**Contact us today for more information about how StormPrism Vault can help you
meet the stormwater storage requirements on your next project.**

James Mayer

Director – Stormwater

jmay@pre-conproducts.com

(602) 499-5881



www.stormprism.com

Dan Zarranandia

Vice President

danz@pre-conproducts.com

(805) 297-5140

SPV - 5' SPAN		
Volume per foot of length		
Rise	Gallons	Cubic Feet
5	180	24
5.5	199	27
6	217	29
6.5	236	32
7	255	34
7.5	273	36
8	292	39
8.5	311	42
9	330	44
9.5	348	47
10	367	49
10.5	386	52
11	404	54
11.5	423	57
12	442	59

SPV - 5.5' SPAN		
Volume per foot of length		
Rise	Gallons	Cubic Feet
5	199	27
5.5	219	29
6	240	32
6.5	260	35
7	281	38
7.5	302	40
8	322	43
8.5	343	46
9	363	49
9.5	384	51
10	404	54
10.5	425	57
11	446	60
11.5	466	62
12	487	65

SPV - 6' SPAN		
Volume per foot of length		
Rise	Gallons	Cubic Feet
5	217	29
5.5	240	32
6	262	35
6.5	285	38
7	307	41
7.5	330	44
8	352	47
8.5	374	50
9	397	53
9.5	419	56
10	442	59
10.5	464	62
11	487	65
11.5	509	68
12	532	71

SPV - 6.5' SPAN		
Volume per foot of length		
Rise	Gallons	Cubic Feet
5	236	32
5.5	260	35
6	285	38
6.5	309	41
7	333	45
7.5	358	48
8	382	51
8.5	406	54
9	430	57
9.5	455	61
10	479	64
10.5	503	67
11	528	71
11.5	552	74
12	576	77

SPV - 7' SPAN		
Volume per foot of length		
Rise	Gallons	Cubic Feet
5	255	34
5.5	281	38
6	307	41
6.5	333	45
7	359	48
7.5	386	52
8	412	55
8.5	438	59
9	464	62
9.5	490	66
10	517	69
10.5	543	73
11	569	76
11.5	595	80
12	621	83

SPV - 7.5' SPAN		
Volume per foot of length		
Rise	Gallons	Cubic Feet
5	273	36
5.5	302	40
6	330	44
6.5	358	48
7	386	52
7.5	414	55
8	442	59
8.5	470	63
9	498	67
9.5	526	70
10	554	74
10.5	582	78
11	610	82
11.5	638	85
12	666	89

SPV - 8' SPAN		
Volume per foot of length		
Rise	Gallons	Cubic Feet
5	292	39
5.5	322	43
6	352	47
6.5	382	51
7	412	55
7.5	442	59
8	472	63
8.5	502	67
9	532	71
9.5	561	75
10	591	79
10.5	621	83
11	651	87
11.5	681	91
12	711	95

SPV - 8.5' SPAN		
Volume per foot of length		
Rise	Gallons	Cubic Feet
5	311	42
5.5	343	46
6	374	50
6.5	406	54
7	438	59
7.5	470	63
8	502	67
8.5	533	71
9	565	76
9.5	597	80
10	629	84
10.5	661	88
11	692	93
11.5	724	97
12	756	101

SPV - 9' SPAN		
Volume per foot of length		
Rise	Gallons	Cubic Feet
5	321	43
5.5	355	47
6	389	52
6.5	422	56
7	456	61
7.5	490	66
8	523	70
8.5	557	74
9	591	79
9.5	624	83
10	658	88
10.5	692	93
11	725	97
11.5	759	101
12	793	106

SPV - 9.5' SPAN		
Volume per foot of length		
Rise	Gallons	Cubic Feet
5	340	45
5.5	375	50
6	411	55
6.5	447	60
7	482	64
7.5	518	69
8	553	74
8.5	589	79
9	624	83
9.5	660	88
10	695	93
10.5	731	98
11	766	102
11.5	802	107
12	837	112

SPV - 10' SPAN		
Volume per foot of length		
Rise	Gallons	Cubic Feet
5	359	48
5.5	396	53
6	433	58
6.5	471	63
7	508	68
7.5	546	73
8	583	78
8.5	620	83
9	658	88
9.5	695	93
10	733	98
10.5	770	103
11	807	108
11.5	845	113
12	882	118

SPV - 10.5' SPAN		
Volume per foot of length		
Rise	Gallons	Cubic Feet
5	377	50
5.5	417	56
6	456	61
6.5	495	66
7	534	71
7.5	574	77
8	613	82
8.5	652	87
9	692	93
9.5	731	98
10	770	103
10.5	809	108
11	849	114
11.5	888	119
12	927	124

SPV - 11' SPAN		
Volume per foot of length		
Rise	Gallons	Cubic Feet
5	396	53
5.5	437	58
6	478	64
6.5	519	69
7	561	75
7.5	602	80
8	643	86
8.5	684	91
9	728	97
9.5	766	102
10	807	108
10.5	849	114
11	890	119
11.5	931	124
12	972	130

SPV - 11.5' SPAN		
Volume per foot of length		
Rise	Gallons	Cubic Feet
5	415	55
5.5	458	61
6	501	67
6.5	544	73
7	587	78
7.5	630	84
8	673	90
8.5	716	96
9	759	101
9.5	802	107
10	849	114
10.5	888	119
11	931	124
11.5	974	130
12	1017	136

SPV - 12' SPAN		
Volume per foot of length		
Rise	Gallons	Cubic Feet
5	433	58
5.5	478	64
6	523	70
6.5	568	76
7	613	82
7.5	658	88
8	703	94
8.5	748	100
9	793	106
9.5	837	112
10	882	118
10.5	927	124
11	972	130
11.5	1017	136
12	1062	142