

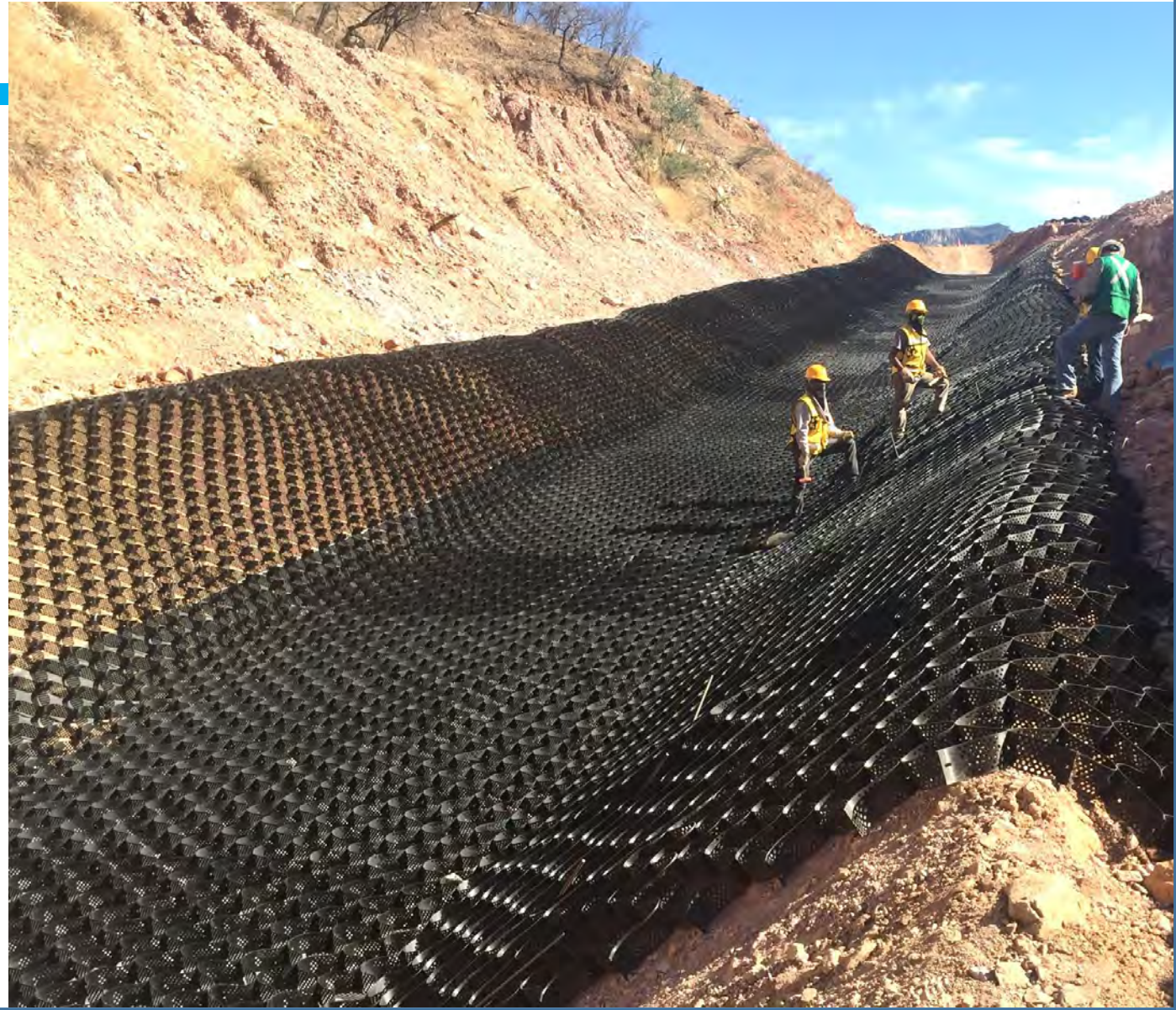
**PRESTO**



# Channel Stabilization

**GEOWEB®**  
Channel Protection System

**Construction**  
Resource Package





**PRESTO**



**GEOSYSTEMS**

**GEOWEB**<sup>®</sup>  
Channel Stabilization System

# Install Resources

## What You Will Find

[Learn About GEOWEB® Channel Protection](#)

[Complete System Accessories](#)

- [ATRA® Keys](#)
- [ATRA® Anchors & Drivers](#)
- [Tendons & ATRA® Tendon Clips](#)

[Installation Resources + Video](#)

[Watch How-To & Project Videos](#)

[Evaluate Your Site](#)

[Construction Training & Oversight](#)

[See Markets & Industries](#)

[Get a Material Estimate](#)

Support resources for a  
successful project.



PRESTO

GEOSYSTEMS®



Install Resources  
for your project



# What is the GEOWEB System?

## Get Familiar with the 3D System

See how the GEOWEB® system is installed for channel protection:

- [Overview Brochure](#)
- [Visit our Photo Gallery](#)
- [See Project Case Studies](#)



**PRESTO**



Design Resources  
for your project



# Channel Infill Options



**VEGETATED CHANNELS**



**AGGREGATE CHANNELS**



**CONCRETE CHANNELS**

PRESTO

GEOSYSTEMS®



Install Resources  
for your project



# Is Installation Weather Dependent?

## All Weather Material

GEOWEB® projects are installed in extreme temperatures and weather—from the coldest to the hottest regions of the world.

Rain or snow—keep your crews working through any weather condition.



PRESTO

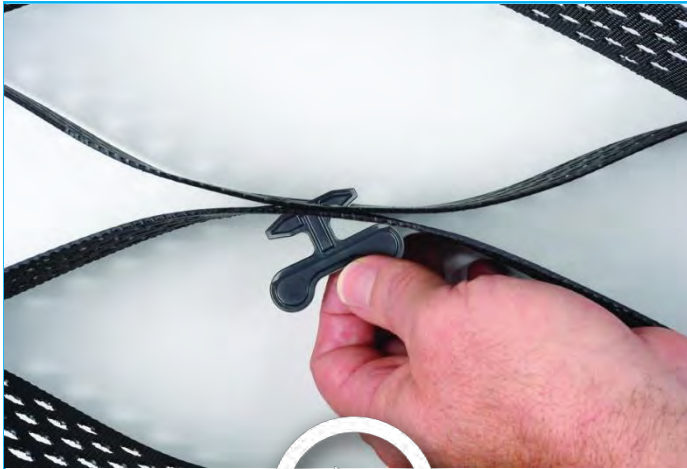
GEOSYSTEMS®



Install Resources  
for your project



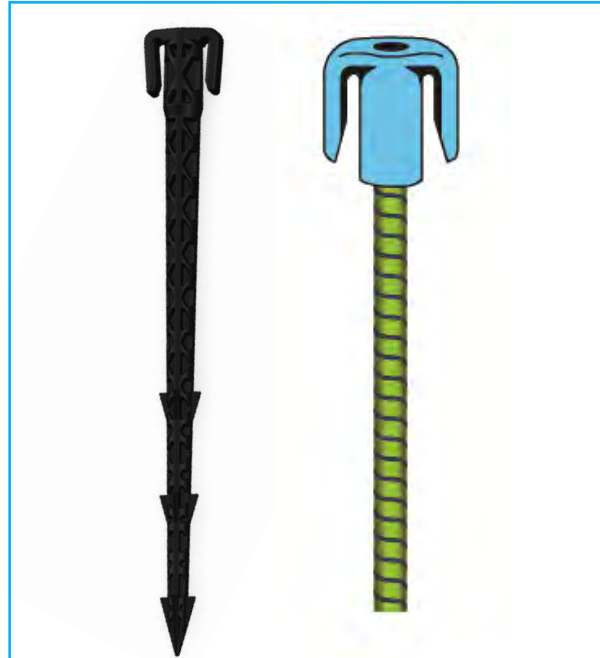
# Are these Accessories on your Project?



## ATRA® Keys

Fast Section Connection

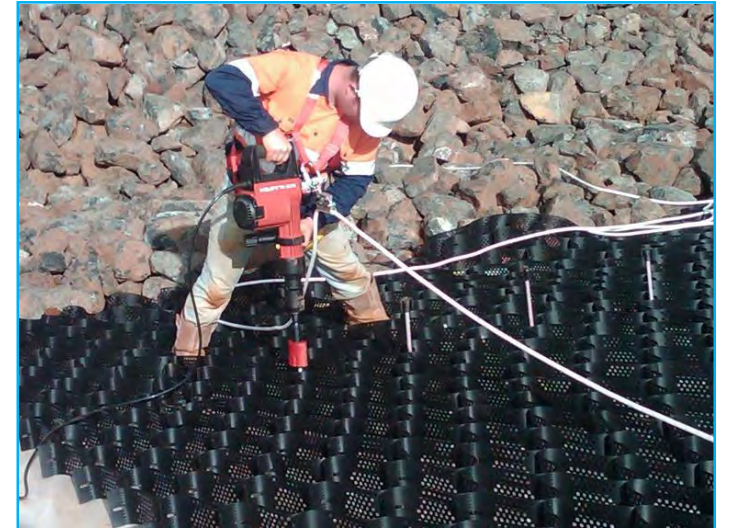
[Download Spec](#)



## ATRA® Anchors

Corrosion-Resistant Anchors

[Download Spec](#)



## ATRA® Drivers

Fast Anchor Driving Tool

[Download Spec](#)

PRESTO

GEOSYSTEMS®



## Fastest Way to Connect GEOWEB Sections



### ATRA® Keys

Connect GEOWEB Sections  
Fast & Efficiently

Faster than Stapling & Non-Corrosive  
Side to side and end to end  
connections

LEARN MORE



# ATRA® Keys



**3X Faster**  
than Stapling  
Operations



**PRESTO**



Install Resources  
for your project



The Key to Getting  
the Job Done  
Faster & Safer!



See how ATRA® Keys outperform  
stapling 3:1 and will give you the time  
advantage on your project.

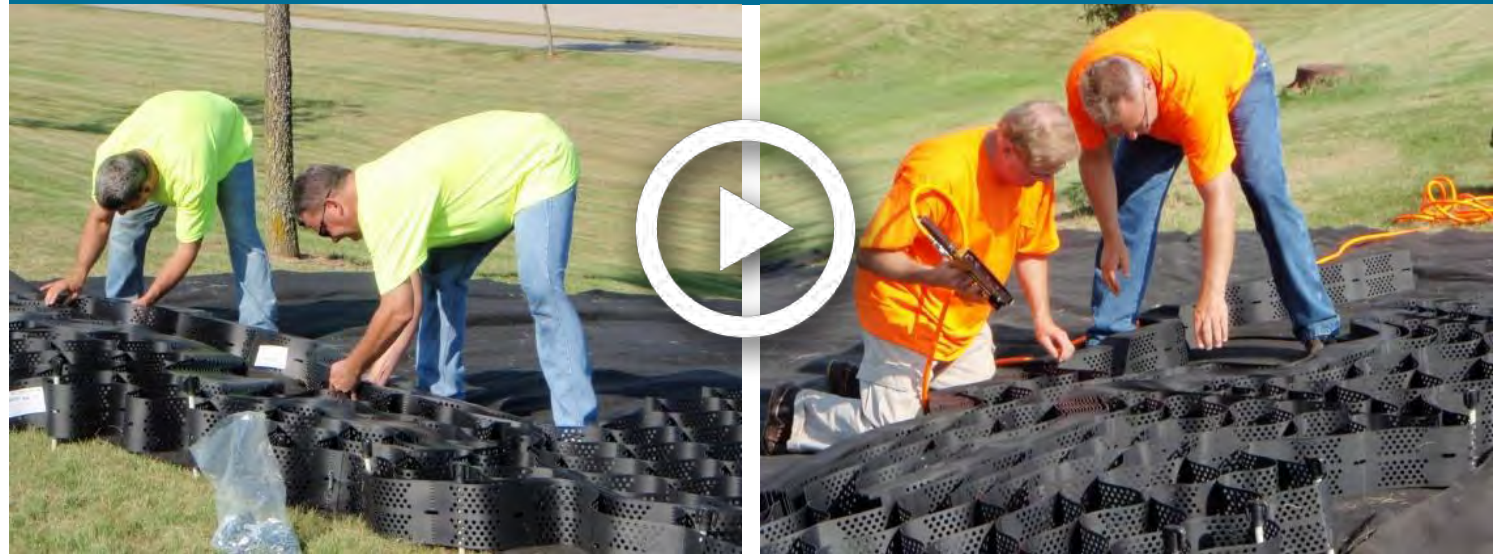
[See the time lapse video >>](#)

Download the  
Comparison>>



# COMPARE

## Installation Speed of ATRA® Keys vs. Stapling



**ATRA Key Connector**

**Stapling Operations**



PRESTO



## ATRA® Anchors & Drivers

LEARN MORE 

Corrosion-Resistant Anchors

Speed Stakes & Glass-Fiber Reinforced

Strongest hold-down; most secure cell wall connection.

# ATRA® Anchors & Drivers



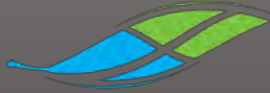
**10X**  
Faster  
Driving  
Tool

than sledge  
hammering



PRESTO

GEOSYSTEMS®



Design Resources  
for your project



# Tendons & ATRA® Tendon Clips

## Fully Integrated for Performance

GEOWEB® projects may require tendons and ATRA® Tendon Clips as **critical integrated components** for securing sections over steep slopes, soils that are difficult to penetrate with anchors, and over impervious liners.

See How to Install Tendons  
& ATRA Tendon Clips



PRESTO



## Watch Short Install Videos

See how the GEOWEB® channel system is installed in this quick step-by-step overview of the construction steps.

Channels with Anchors 

Channels with Tendons & Tendon Clips 





# How do you Install it?

## Review Installation Sequence

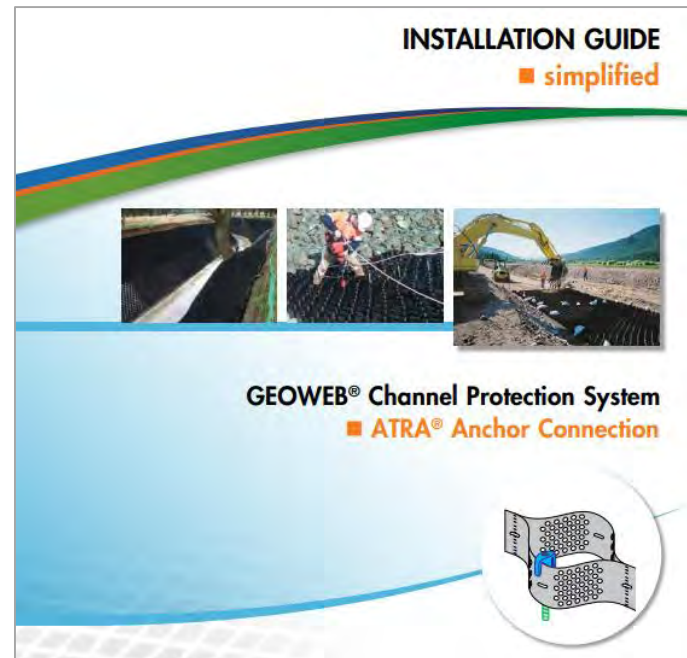
The GEOWEB® system is fast & easy to install. See simple installation in this step-by-step overview guide.

[Channels with Anchors](#)

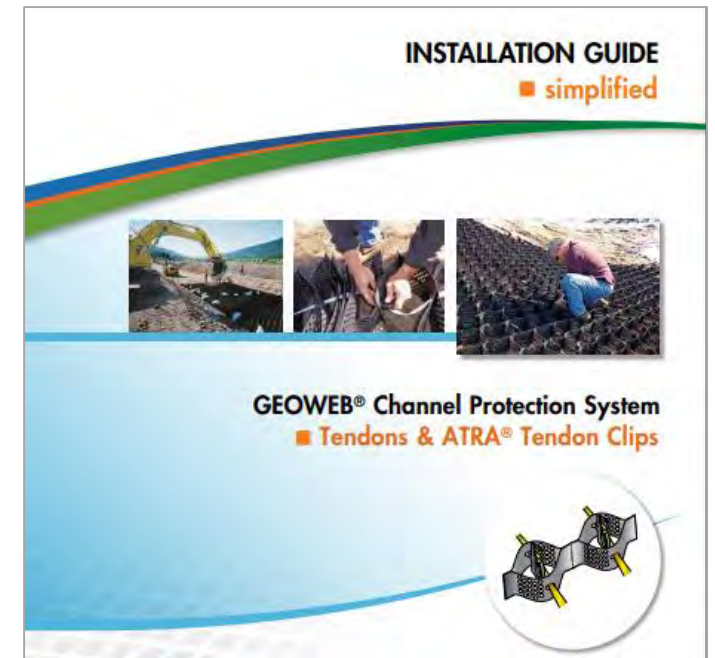
[Channels with Tendons & Tendon Clips](#)

## Want to Learn More?

- [Read the Full Installation Guide](#)



Secured with  
ATRA® Anchors



Secured with  
Tendons & ATRA® Tendon Clips

PRESTO

GEOSYSTEMS®



# Let Our Knowledge Work for You

## Our 40+ Years Experience Will Help You on Your Project

The GEOWEB® system is the original—and most advanced geocell on the market.

We developed the technology and advanced the technology.

We have the knowledge & experience to help you solve your site problems.

- [Learn about development of geocells >>](#)





## See Product in Action

[Visit our Video Gallery >>](#)



[Watch Cross-Section Animation >>](#)

[Watch Simple Installation Video >>](#)  
(Anchors)

[Watch Simple Installation Video >>](#)  
(Tendons & Tendon Clips)

[See Colorado Canal Project Installation >>](#)



# Can it handle your Site Problems?

## Let Us Evaluate Your Project

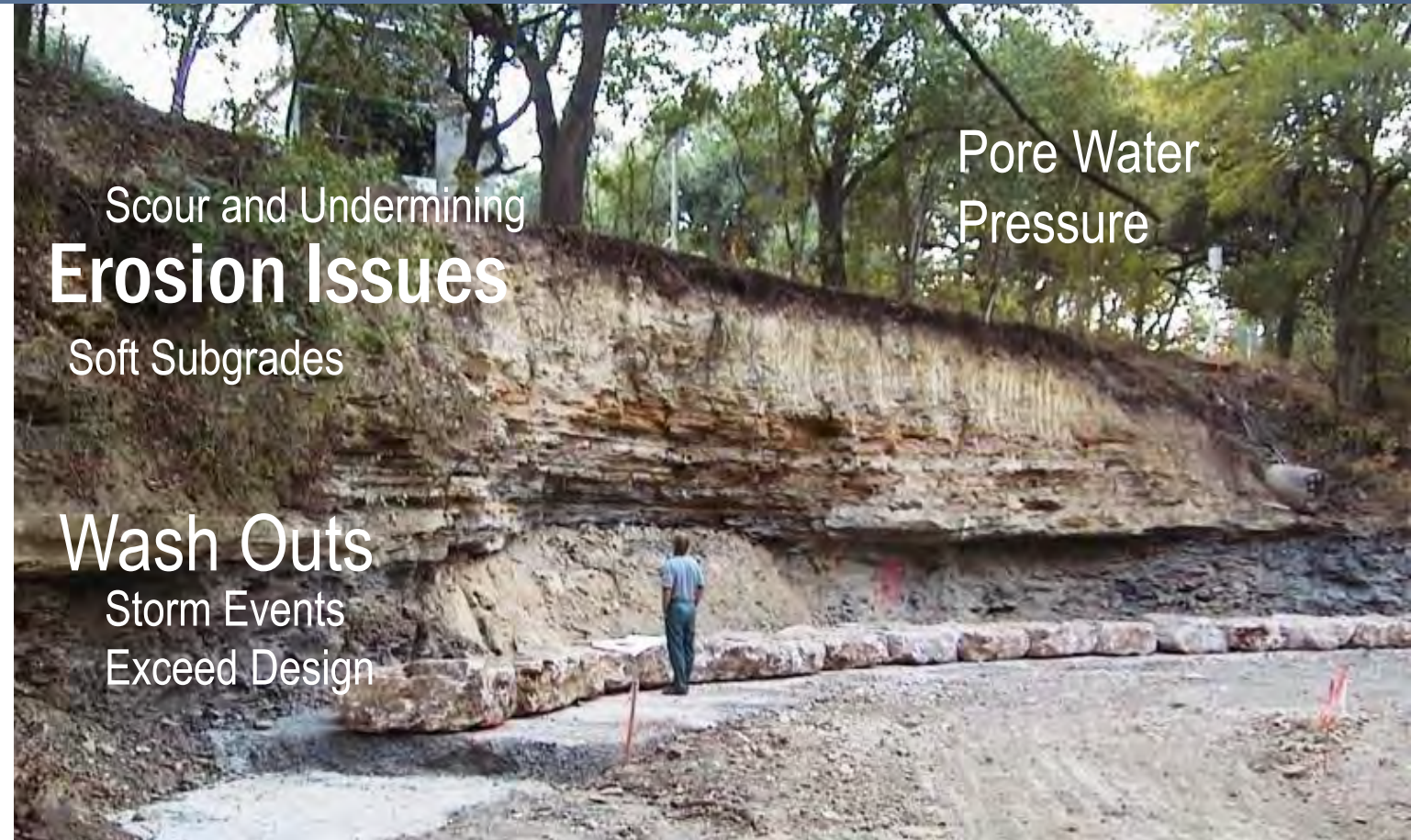
### Your site has problems.

Scour, undermining and erosion problems caused by intermittent or continuous flows and insufficiently protected subgrades. Pore water pressure. Wash out of unconfined material. Unprotected liners. Storm events.

### Will our solution work?

We can arrange a meeting to discuss your site and evaluate the feasibility of our solutions for your site challenges.

Email [info@prestogeo.com](mailto:info@prestogeo.com) to request a site evaluation.



Scour and Undermining  
**Erosion Issues**

Soft Subgrades

**Wash Outs**  
Storm Events  
Exceed Design

Pore Water  
Pressure

PRESTO

GEOSYSTEMS®



Install Resources  
for your project



# Can we help Train your Crews?

Learn Efficient Techniques  
Before You Install  
**Pre-Construction Training.**  
**Construction Oversight.**

We can arrange to train your crew before installation—with pre-construction meetings and demos—and be there for on-site support during construction.

Email [info@prestogeo.com](mailto:info@prestogeo.com) to request construction site support.





# Transforming Markets & Industries

See GEOWEB® projects  
in action in a variety of  
applications & industries.



**PRESTO**



Drainage / Parking Lot Runoff

## Drainage Swales Natural Vegetation

- Build naturally-vegetated channels to protect low-flow drainage swales in place of maintenance prone rip rap.
- Build GEOWEB vegetated channels adjacent to parking lots and roads for natural runoff infiltration.
- The GEOWEB/TRM system can withstand velocities as high as 30 ft/s (9 m/s) and 16 psf shear stresses=7.5 times greater than unprotected channels.

[LEARN MORE](#) 

A photograph showing a drainage swale with a grassy bank and several large trees. The trees have thick, gnarled trunks and dense green foliage. In the background, a parking lot with several cars is visible. A blue text box is overlaid on the bottom left of the image.

**7.5 Times  
Greater Resistance**



**PRESTO**

**GEOSYSTEMS®**



Drainage/Flood Volume Control

## Stormwater Drainage Natural Vegetation

- Build deep multi-layered vegetated channels to maximize stormwater volume and mitigate flooding potential.
- Build vegetated channels for natural aesthetics instead of costly, higher-maintenance rip rap.



[LEARN MORE >>>](#)



**Lower Cost  
Than Rip Rap**



**PRESTO**



## Embankment Erosion Control

### Streambanks

### Natural Vegetation

- Build naturally-vegetated streambank embankments to resist erosive forces caused by water fluctuations and storm events.



Bank Erosion before Repair



## Natural Erosion-Resistant

LEARN MORE 

GEOWEB Embankments  
with Early Vegetation



**PRESTO**



## Culvert Outfall

# Stormwater Channel Natural Vegetation

- Protect culvert outfall area from scour and erosion caused by short-term, high-velocity flows & turbulence with naturally-vegetated upper embankments.
- Integrate coir fabric wrapped around the channel face to resist infill loss.



[LEARN MORE](#) 



**Lower Scour  
In High Impact  
Areas**



**PRESTO**



## Conveyance Between Ponds

### Stormwater Conveyance Aggregate

- Build low-flow conveyance channels and drainage ways with aggregate.
- Reduce bank erosion from water fluctuations and wave chop.
- Use decorative angular rock for aesthetic appeal.



[LEARN MORE](#)



**Less Washout  
Confined Rock is Stable**



**PRESTO**

**GEOSYSTEMS®**



Storm Event Flood Control

## Peak Conveyance Aggregate

- Build flood control channels to accommodate high flow conditions during peak storm events.
- Aggregate fill offers low maintenance channel with lower cost, smaller particle size.



LEARN MORE



## Smaller Rock Replace Larger, Expensive Rock



**PRESTO**

**GEOSYSTEMS**

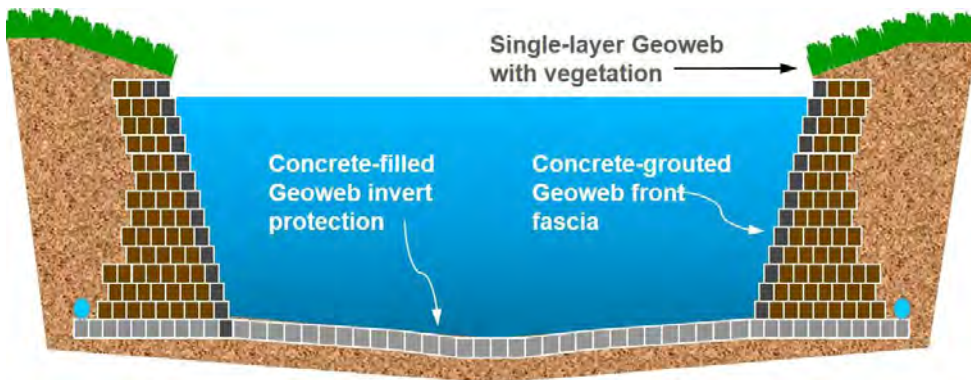


## Narrow Profile Flood Control

# Stormwater Channels

## Mixed Infill

- Build space-constrained flood control channels with deep, narrow profiles to contain higher stormwater volume during peak events.
- Seamlessly integrate a single-layer vegetated upper embankment with tiered, hard-armored wall to the high water level for maximum resistance.



[LEARN MORE](#)



# Seamless Ease of Construction





**PRESTO**



Flexible Hard-Armored Conveyance

## Irrigation Canals Concrete

- Build hard-armored canals to protect liners, resist freeze-thaw expansion and contraction issues.
- Build low-maintenance 'flexible' concrete channels to flex and conform to minor subgrade movement without cracking.



LEARN MORE



**Flexible Concrete**  
**Virtually No Maintenance**



**PRESTO**

**GEOSYSTEMS®**



Control/Capture Parking Lot Runoff

## Stormwater Runoff Concrete

- Build hard-armored channels adjacent to parking areas to control/capture runoff.
- Lower cost solution than reinforced or articulated concrete block systems-- No additional formwork or reinforcement required.



LEARN MORE



**Economical  
Compared to Concrete  
Alternatives**



**PRESTO**



Spillways / Pipe Discharge

## Golf Courses

- Build concrete spillways at golf courses to direct stormwater flow to ponds.
- Protect pipe discharge areas with hard-armored system.
- More economical solution than reinforced concrete or articulated concrete block systems.



LEARN MORE



**Flexible Form**  
**No Extra Reinforcement**



**PRESTO**



Stormwater & Process Channels

## Mines

- Build flexible, hard-armored drainage & diversion channels to convey higher flowrates across tailings on mine sites.
- Use on-site aggregate fill and reduce rock size 10X for large project savings.



LEARN MORE



**10X**  
Smaller Rock =  
3-5X Lower Cost



**PRESTO**



## High Flow-Flood Control

### Railroads Stormwater Channel

- Build hard-armored flood control channels at rail sites to convey high flowrates and mitigate flooding potential.
- Protect impervious liners with a tendoned anchoring system (no puncturing anchors).



LEARN MORE 

**Save \$ on  
Each Project**  
Fast Placement without  
Extra Reinforcement





**PRESTO** | **GEOSYSTEMS**<sup>®</sup>



Your Project is Important. See How We Can Help.

## THE PRESTO ADVANTAGE

See how our advanced, adaptable geocells, porous pavers and mats put your project on track for success, and keeps your projects on time and on budget.

[WATCH THE VIDEO](#)





What is the Price?

# Get an Estimate

Our global network of distributors and representatives will work with you to provide a price estimate.

[Find Local Distributor/Rep >>](#)





**PRESTO**

**GEOSYSTEMS®**

**GOWEB®**

Channel Protection System

## Design with Certainty.

Get answers to your questions and help with your design. Our solution will be tailored for your unique project and site challenges. You can rely on our experience, tools & resources to help you create a quality design package



**Certainty and Peace of Mind—  
from project start to finish.**

**Contact Us**

**1-800-548-3424 | [www.prestogeo.com](http://www.prestogeo.com)**