

# GEOPAVE®

Porous Pavement System

## Construction Resource Package



# GRAVEL PAVERS







**PRESTO**



**GEOSYSTEMS®**

# Install Resources

## What You Will Find

[Learn About GEOPAVE® Pavers](#)

[Compare Product & Performance](#)

[Installation Considerations](#)

[Step-by-Step Easy Installation](#)

[Watch Videos](#)

[Evaluate Design & Construction Data](#)

[See Applications](#)

[Get a Material Estimate](#)

Support resources for a  
successful project.





# What are GEOPAVE Pavers?

## Get Familiar with Gravel Pavers

See how the GEOPAVE® system is installed for gravel porous pavements:

- [Overview Brochure](#)
- [Visit our Photo Gallery](#)
- [See Project Case Studies](#)



PRESTO



Design Resources   
for your project

## Compare Product & Performance Attributes

Comparing GEOPAVE rigid pavers to flexible pavers & rolled systems is like comparing apples to oranges.

See what makes GEOPAVE rigid pavements the **best solution to resist loading and traffic stresses**.

[See the Comparison >>](#)

## COMPARE Rigid to Flexible Paver Systems >>

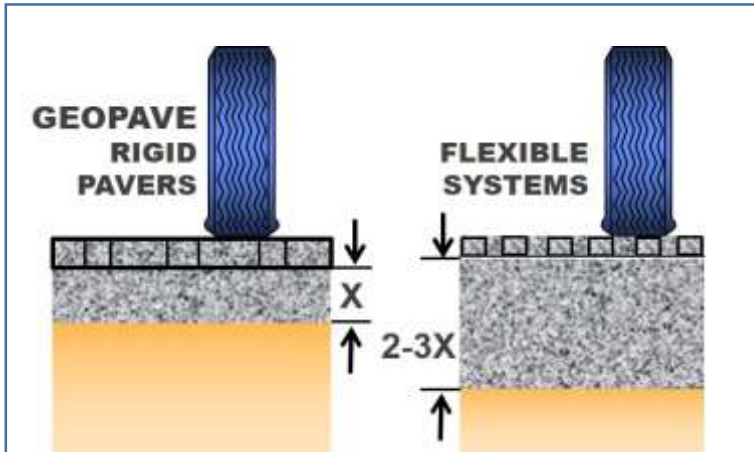




## Fact Check #1

# Base Materials & Cost

**GEOPAVE pavers require up to 3X less base.**



### Rigid GEOPAVE Pavers Require Low Base.

The GEOPAVE paver's strong, rigid interconnected design contributes to the system's overall strength--so much lower base is required. Low base means less cutting, less hauling of materials, less aggregate and **less overall cost.**



### Rolled Products Require Deep Base.

Rolled products require as much as 3X deeper base to support loading. This means more cutting, more hauling of excavated material, more hauling of base materials, and **more overall cost.**

## Fact Check #2

# Ease of Connection **GEOPAVE pavers are easier to install.**



### Rigid GEOPAVE Pavers Lay Flat

GEOPAVE rigid pavers are shipped flat and lay flat—making them easy to fasten—and no connector clips to get broken.



### Rolled Products Do Not Lay Flat.

Rolled products maintain their rolled 'memory', making it difficult to align and fasten the connector clips. They also require numerous stakes to hold down the product—stakes that work their way up over time.



Flexible connections can also break in transit.



PRESTO



Design Resources  
for your project 

## Fact Check #3

Constructability  
**Unfilled GEOPAVE pavers can be driven on.**



### Construction Vehicles Can Drive on Unfilled GEOPAVE Pavers.

Because of their rigidity and strength, construction vehicles can drive on GEOPAVE pavers before and during infilling process—significantly speeding time to deliver and spread infill.



### Rolled Products Cannot be Driven on Before they are Infilled.

Because of their flexible nature, rolled products cannot be driven on until completely infilled—slowing down time to deliver and spread infill.

PRESTO



Design Resources  
for your project



## Rigid Pavers Save You Money on Construction

See how GEOPAVE gravel pavers are designed for **fast, efficient installation**.

You'll complete projects faster—and without post-construction maintenance to worry about.

[Watch the Step-by-Step Installation Video>>](#)

## Fast, Efficient Installation





**PRESTO**

**GEOSYSTEMS®**

Design Resources  
for your project



# Watch Videos

See Product in Action



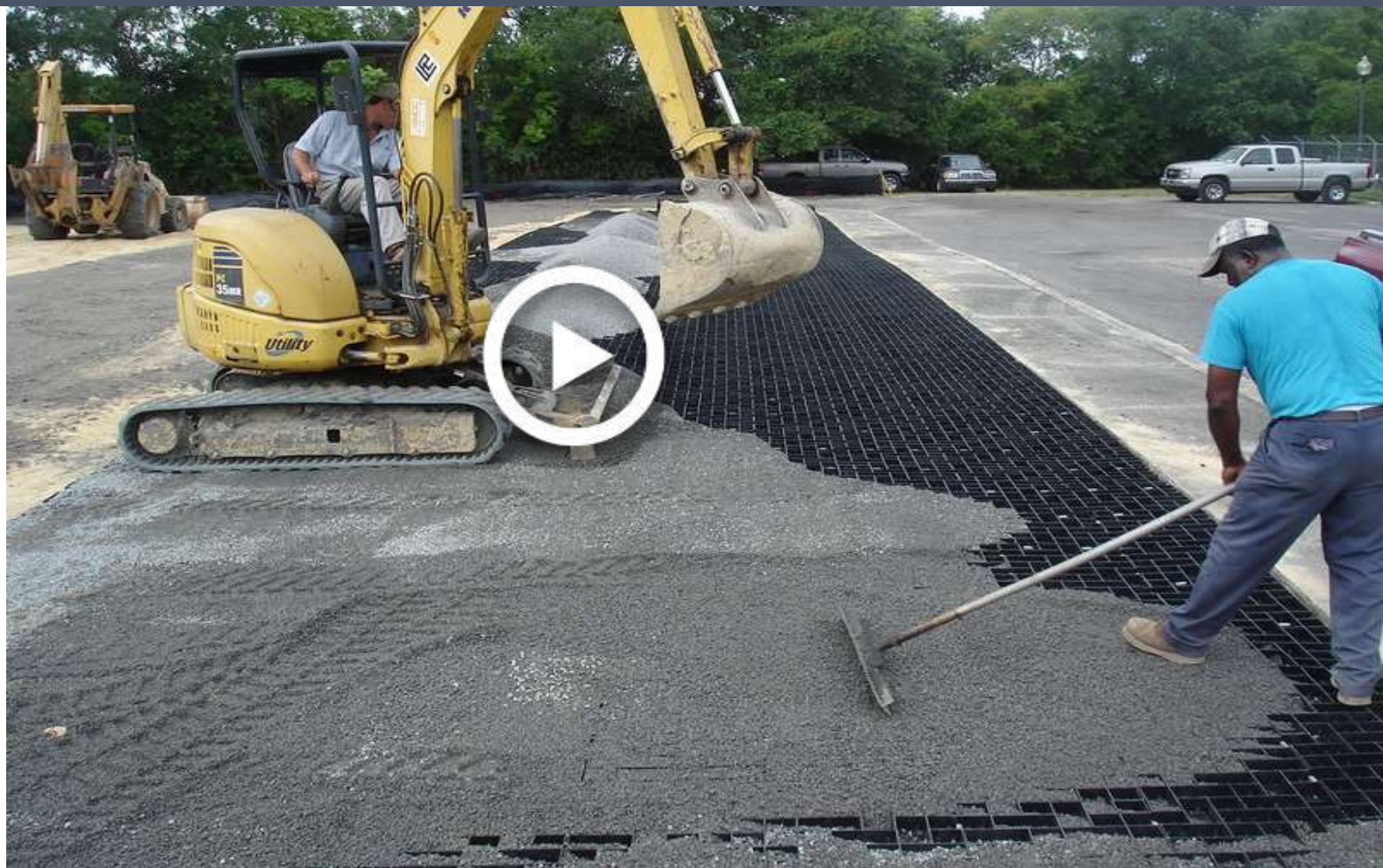
[Visit our Video Gallery >>](#)

[Watch Cross-Section Animation >>](#)

Project Installations

[Permeable Parking at The Citadel >>](#)

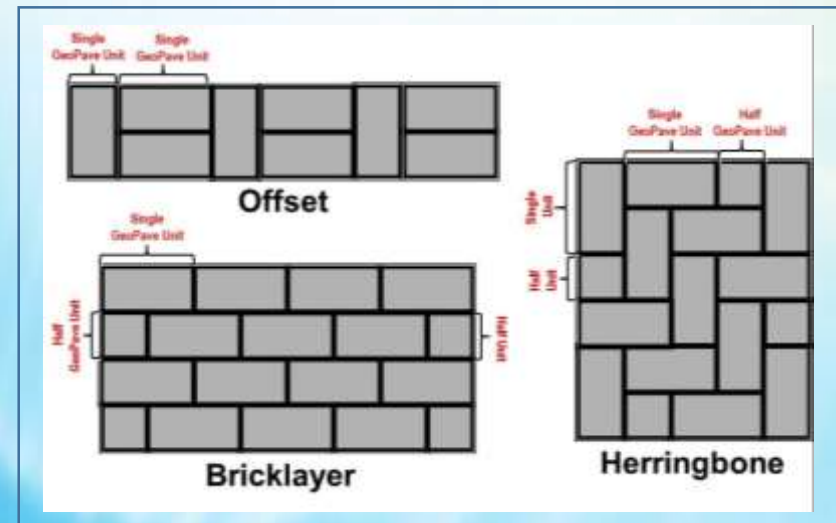
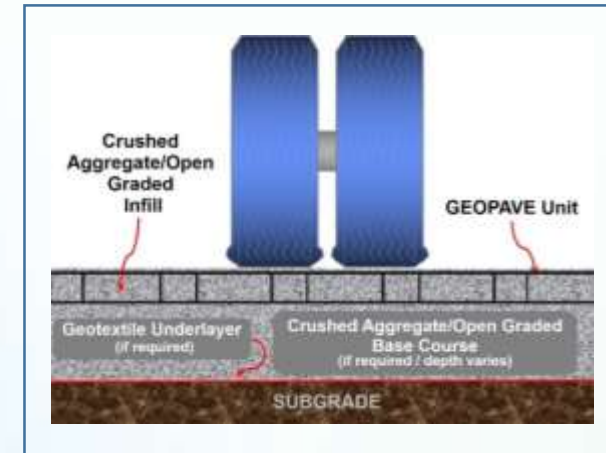
[Parking & Walkways at The Ridges Sanctuary >>](#)



## How do GeoPave Pavers Work?

Learn the methods important to designing and constructing GEOPAVE porous pavements.  
Base Recommendations. Fill & Base Aggregate Size.  
Laying Patterns. Unit Connection.

Read Design &  
Construction Guide >>





# Porous Pavement Applications

Learn more about  
GEOPAVE® Pavers in a wide  
range of porous pavement  
applications.

Design Resources  
for your project





**PRESTO**



## Urban Runoff Control

### Fire & Utility Access

- Build stable gravel emergency and maintenance access lanes for cars and trucks (to H-20 loading) to resist heavy loading stresses.
- Use open-graded aggregate base and infill for fast infiltration and stormwater runoff reduction.

LEARN MORE 

**50% Less**  
**Base Materials**





**PRESTO**



## Green Infrastructure Design

### Roadway & Parking

- Build GEOPAVE gravel roadways & parking areas to meet city/state stormwater requirements for pervious surfaces & capture runoff from adjacent hard pavements.



LEARN MORE



**Less Stormwater  
Infrastructure Required**





**PRESTO**



## Wetlands Protection

### Parking Stalls

- Build permeable parking stalls to infiltrate water at the point of contact—keeping runoff out of nearby protected wetlands, sensitive areas & waterways.
- Meet pervious pavement regulations with a percentage of parking area designated as permeable.



LEARN MORE 

**Less** Runoff  
into Waterways





**PRESTO**



## Stormwater Management

### Parking Lots

#### On-site Stormwater Storage

- Build parking areas with open-graded aggregate for fast infiltration and runoff reduction.
- The pavement layer acts like a stormwater retention 'basin' storing water on-site for natural infiltration.
- Reduce and eliminate stormwater ponds and infrastructure.

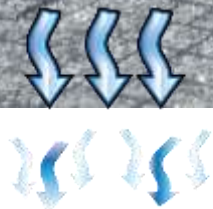


LEARN MORE >>



**Reduce Ponds  
with Open-Graded  
Aggregate**

Water Flow



**PRESTO**



Pavement Integration

## Integration with Asphalt Pavements

- Build GEOPAVE pavements to accept the sheetflow runoff from adjacent impervious pavements (asphalt).
- Paver units are easily installed/cut to integrate seamlessly with hard pavements.

LEARN MORE 

## Easy Integration with Hard-Surface Pavements





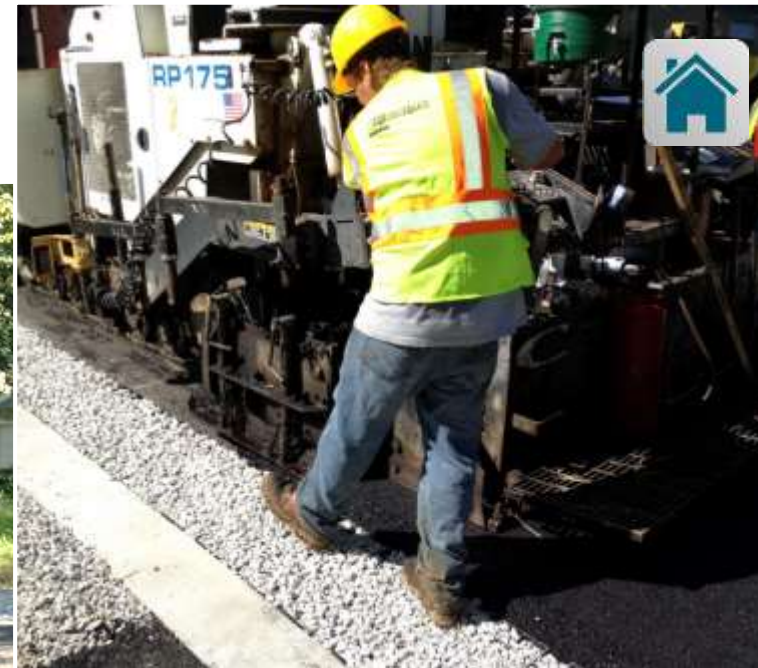
**PRESTO**



## Edge & Runoff Control

### Road Shoulders

- Build permeable, load-supporting road shoulders for edge control on soft shoulders and to allow natural stormwater infiltration.
- Integrate with hard surface paving (eg asphalt).



**Permeable  
Control  
of Soft Shoulders**

LEARN MORE 



**PRESTO**



Low Environmental Impact

## Multi-Use Trails

- Build pedestrian, bicycle, equestrian and ATV trails to protect the trail's surface integrity under loading and from erosive forces.



LEARN MORE 

An aerial photograph showing a large-scale construction project for a multi-use trail. The trail is being built on a dirt embankment next to a body of water. The trail surface is covered in gravel, and there are several yellow construction vehicles (excavators) working on the site. The surrounding area is lush with green trees and vegetation.

**Control  
Erosion  
on Trail Surfaces**



**PRESTO**



## Use of Local Resources

### Pedestrian Trails & Walkways

- Build low environmental impact trails and walkways with local aggregate resources.
- Open-graded aggregate infill is suitable for barrier-free access.



LEARN MORE 

**Local  
Resources  
for Low Cost Fill**





**PRESTO**



## Control Runoff into Waterways

### Shoreline Access Ways

- Build walkways and drive access ways for low environmental impact to fresh water sources and protected areas.
- Use local and decorative stone for landscape blending and delineation.



LEARN MORE 



**Eco-Friendly  
HDPE Material Safe  
Near Waterways**







Your Project is Important. See How We Can Help.



## Certainty:

*/ˈsɜrtntē/*

The quality that a successful outcome is inevitable.

Take the tour to find out how "The Presto Advantage" assures results for your project.



# The Presto Advantage





What is the Price?

# Get an Estimate

Our global network of distributors and representatives will work with you to provide a price estimate.

[Find Local Distributor/Rep >>](#)







**PRESTO**

**GEOSYSTEMS®**

**GEOPAVE®**

Porous Pavement System

## Design with Certainty.

Get answers to your questions and help with your design. Our solution will be tailored for your unique project and site challenges. You can rely on our experience, tools & resources to help you create a quality design package



**Certainty and Peace of Mind—  
from project start to finish.**

**Contact Us 1-800-548-3424 | [www.prestogeo.com](http://www.prestogeo.com)**