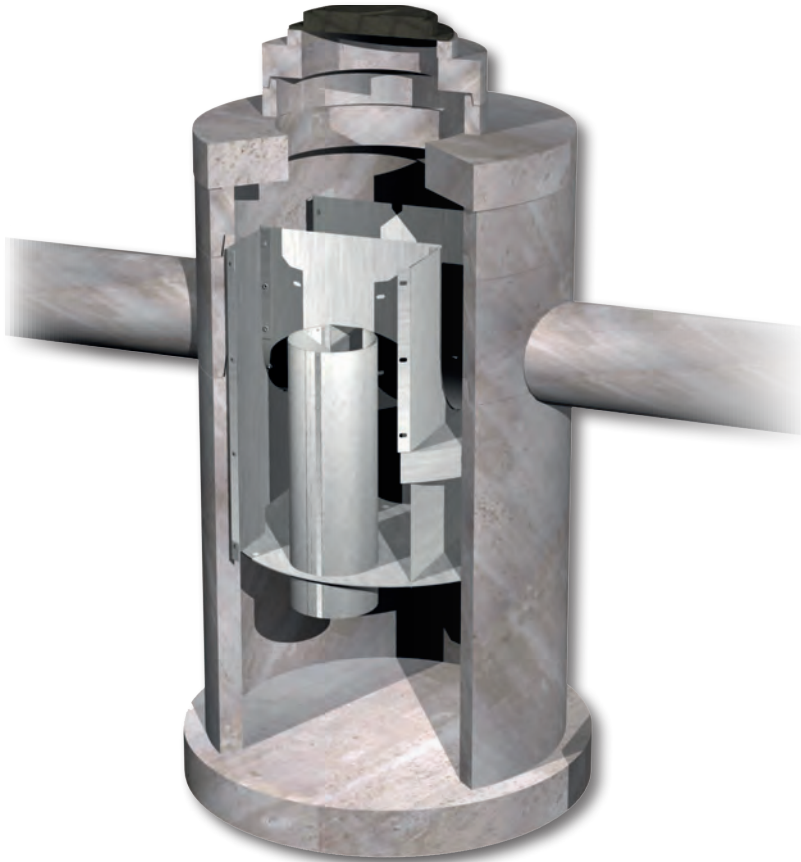


# DUAL-VORTEX SEPARATOR

*Enhanced Gravity Separation of Stormwater Pollutants in a Compact Configuration*



## Dual-Vortex Efficiency

Particle settling is enhanced by circular flow patterns and a highly circuitous flow path created by two independent vortex cylinders.

Settled particles are collected in the isolated bottom storage area, while floating trash, debris and petroleum hydrocarbons are retained in the cylinders and upper storage areas.

During peak events, flows in excess of design treatment overtop the bypass weir and exit the system without entering the cylinders and lower storage area, thereby eliminating re-entrainment issues.

## FEATURES

Maintenance Accessible Design

Economical Installation

Access Options

Online System Capability

Durable Construction

Proven Performance

Treatment Train

## BENEFITS

Open access to accumulated floatables and two access points to sediment storage area

Prepackaged and provided as compact round or square manholes or small vaults  
Multiple access options (manhole cover or optional hinged lid) allow for site-specific customization

Internal high-flow bypass weir system provides for online or offline configurations

Stainless-steel components installed in a reinforced concrete structure

Third party tested and certified

Can be installed upstream of infiltration, detention and retention systems or other treatment BMP's



Call us today **(800) 579-8819** or visit our website for detailed product information, drawings and design tools at [www.oldcastlestormwater.com](http://www.oldcastlestormwater.com)

## Dual-Vortex Separator Offers an Innovative, Economical Alternative for Removal of Suspended Pollutants from Stormwater Runoff

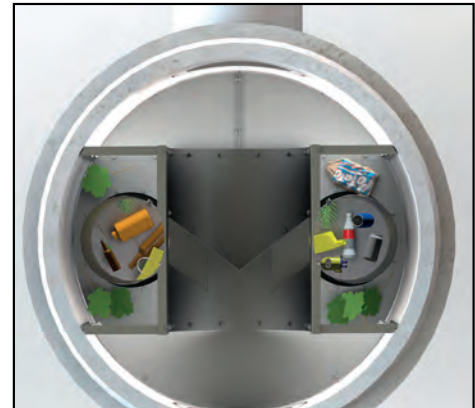
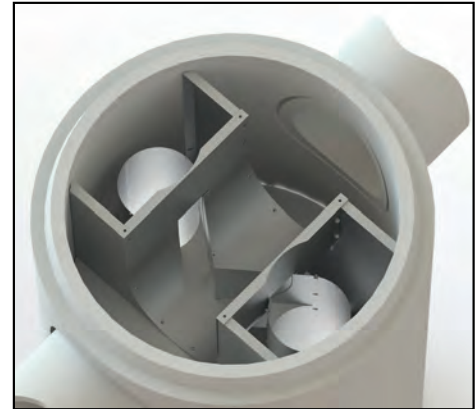
### How it Works

**STEP 1 Independent Vortex Cylinders & Control Weir** - Flows are directed to the two independent vortex cylinders where particle settling is enhanced by circular flow patterns.

**STEP 2 Captured Floatables** - Floating trash, debris and petroleum hydrocarbons accumulate at the top of the two cylinders where they are held until transfer into the upper storage area by peak storm events.

**STEP 3 Removal of Total Suspended Solids (TSS)** - Particle settling is enhanced by the circular flow patterns and a highly circuitous flow path created by two independent vortex cylinders. Sediments are collected and retained in the isolated bottom storage area.

**STEP 4 High-Flow Bypass** - Flows in excess of the design treatment overtop the bypass weir and exit the system without entering the cylinders and re-entraining captured pollutants.



Models and Nominal Dimensions

Model No.	Structure Diameter (ft.)	Standard Sump Depth* (ft.)	Minimum Rim to Invert Depth (ft.)	Sediment Storage* (cubic feet)	Oil and Floatables Storage (cubic feet)
DVS-36	3	4.5	2.5	11	6
DVS-48	4	5.0	3.0	19	15
DVS-60	5	5.5	3.5	29	29
DVS-72	6	6.5	4.5	42	49
DVS-84	7	7.0	5.0	58	79
DVS-96	8	8.0	5.5	75	116
DVS-120	10	10.0	7.0	118	226
DVS-144	12	11.5	8.0	170	388

\*Depth of unit can be increased to add storage capacity

#### Available Options

- Square configurations to accept multiple inlet pipes or to meet other special site conditions
- Flume inlet control for grated inlet applications