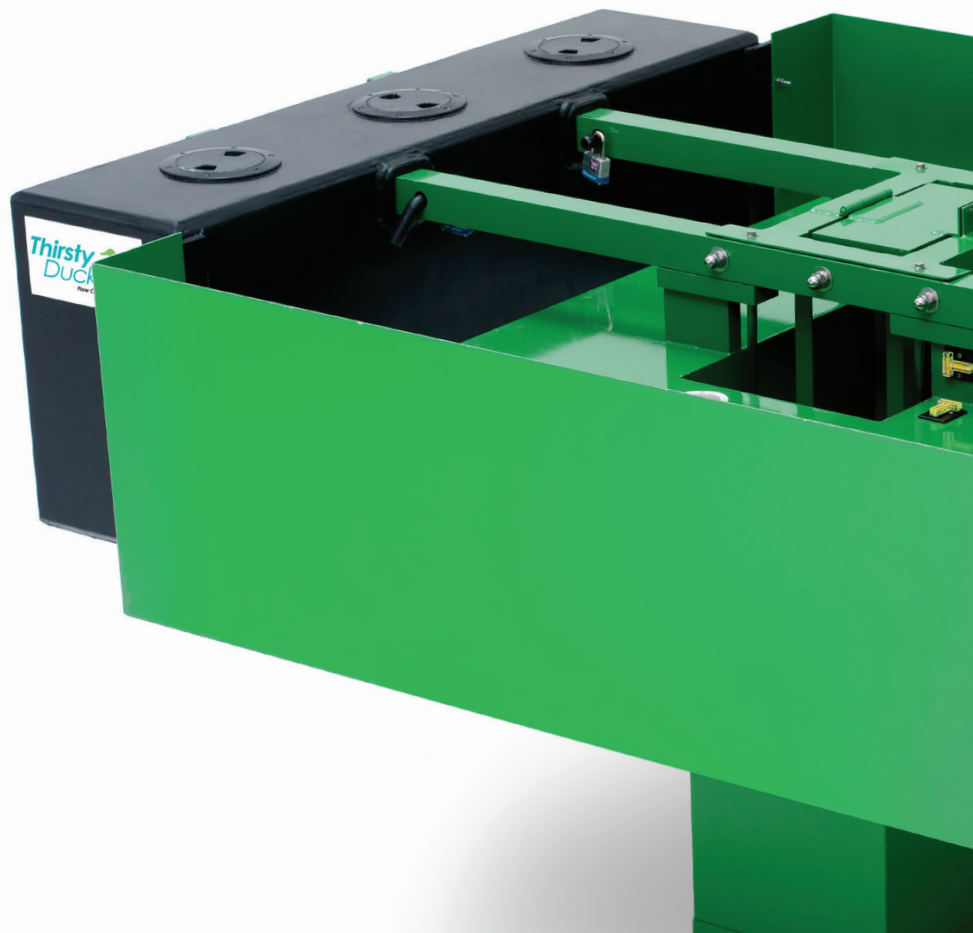
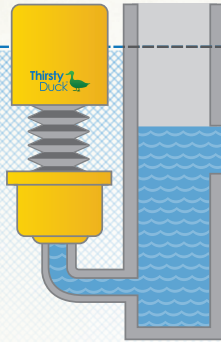




# A RADICAL ADVANCEMENT IN FLOW CONTROL TECHNOLOGY



# INTRODUCING A RADICAL ADVANCEMENT IN FLOW CONTROL TECHNOLOGY.



Based on the simple science of buoyancy, Thirsty Duck employs groundbreaking flow control technology that drains water at a nearly constant rate — requiring less detention volume and therefore reducing stormwater system size by up to 50%.

**REDUCE SYSTEM  
SIZE BY UP TO 50%**

**PERMITTABLE,  
PROVEN, LAB-TESTED**

**FREE NO-OBLIGATION  
DESIGN EVALUATION**

## HOW DOES IT WORK?

Whereas traditional flow control systems only reach the design discharge when the storage volume is full, a Thirsty Duck flow regulator maintains its flow restriction at a fixed depth below the water surface, producing a nearly constant flow which reduces storage volumes while meeting regulatory requirements.

## WHAT'S IN IT FOR YOU?



### MAXIMIZE LAND USE

Because of Thirsty Duck's constant flow rate, stormwater systems will require less detention volume — meaning you can free up more developable land.



### TOTAL COMPLIANCE

Our product uses the principle of buoyancy, with no mechanical parts and little to no maintenance, helping you meet regulations.



### LOWER EXPENSES

Because our product helps minimize system volume, less land area is needed for ponds or vaults — saving money on raw land, reducing construction costs and saving valuable time.



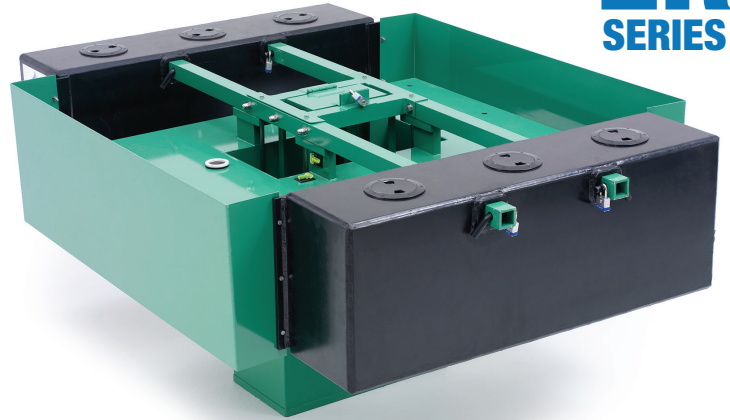
# WHICH ONE IS RIGHT FOR YOU?

## TD SERIES



- For applications needing discharges less than 1.5 cfs (675 gpm)
- Features expanding bellows operation

## ER SERIES



- For applications needing discharges greater than 1.5 cfs (675 gpm)
- Features telescoping tube operation
- Fits within standard precast inlet boxes

## FREQUENTLY ASKED QUESTIONS

### 1 CAN I GET A PERMIT?

Yes. Thirsty Duck is approved by multiple state DOTs and environmental regulatory agencies.

### 2 WILL IT CLOG?

All solutions clog, but ours rarely does because it's self-skimming and has larger openings than traditional technologies.

### 3 HAS IT BEEN TESTED?

Thirsty Duck has been rigorously tested at the St. Anthony Falls Laboratory, and there have been units in the field for over 10 years.

### 4 IS IT DIFFICULT TO INSTALL?

Nope. It bolts right onto the outlet and requires simple tools. We'll even send over a specialist to make sure everything goes well.

### 5 HOW MUCH MAINTENANCE IS INVOLVED?

Thirsty Ducks are designed to require no more maintenance than traditional solutions.

### 6 WILL IT SURVIVE TIME AND WEATHERING?

Our products are fabricated from high-quality materials, selected to withstand harsh stormwater system environments.

### 7 IS IT USED FOR NEW CONSTRUCTION OR RETROFIT APPLICATIONS?

It can and has been used for both.

### 8 DOES IT WORK FOR UNDERGROUND STORAGE VAULTS AND CHAMBERS?

Absolutely. It works in open ponds, application vaults and manufactured chamber systems.

### 9 WILL IT WORK FOR MY PROJECT?

We can customize Thirsty Duck for any application. Send us your project for a free design evaluation, and see for yourself.

### 10 WILL IT ACTUALLY SAVE ME MONEY?

Our track record speaks for itself. Check out our case studies below.





# THIRSTY DUCK IN THE WILD.

Currently used coast to coast and approved by multiple state DOTs and environmental regulatory agencies, Thirsty Duck has delivered on its promises for customers all over.



## RECLAIMED 2.3 ACRES OF LAND FOR USF

We installed a Thirsty Duck for the University of South Florida, giving them 2.3 acres of impervious area credit that allowed them to expand student facilities, improve water quality and flood control and meet TMDL criteria for Cypress Creek.

## REDUCED POND SIZE BY HALF FOR TOYOTA

We delivered a custom Thirsty Duck and reduced the detention pond's required surface area by 50% — allowing the dealership to construct the project entirely on its own land with no reduction in proposed impervious surface.

## MAXIMIZED LAND USE FOR WA COMMUNITIES

By using Thirsty Duck, both Stratford Court and Glennwick Grove were able to reduce the size of their stormwater vault detention systems by 12,000 and 10,500 cu ft, respectively.

## SCHEDULE YOUR FREE, NO-OBLIGATION DESIGN EVALUATION TODAY.

### CALL:

(844) 376-2400 toll-free  
(727) 376-2400 direct

### EMAIL:

[design@thirsty-duck.com](mailto:design@thirsty-duck.com)

### LEARN:

[YouDontKnowDuck.com](http://YouDontKnowDuck.com)

### VISIT:

2154 Duck Slough Blvd.  
Bldg. 4, Suite 103  
Trinity, FL 34655



**Thirsty Duck®**   
Flow Control Technology